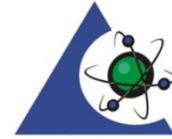




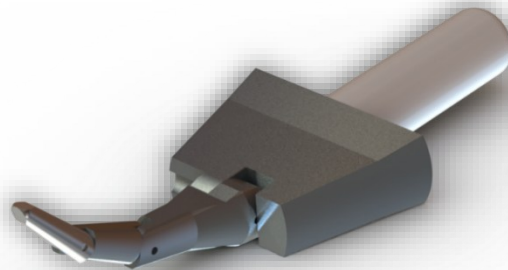
A  Company



Accreditation No.: 75821

**ISO/IEC17025**

## UL Metal Articulated Probe – Model ULP20-68



The UL Metal Articulated Probe is a precision test finger designed to meet Underwriters Laboratories (UL) requirements found in numerous safety standards. Specifically crafted for evaluating access to hazardous parts by children, this jointed probe accurately replicates the dimensions and movement of a small hand.

For applications requiring a non-flexing, rigid design for forceful insertion, we recommend the **UL Metal Rigid Finger Probe - Model ULP25**, which is built to the same specifications but without articulation.

In addition to UL standards, this probe is also compliant with more stringent international standards, including IEC 62368-1, making it a versatile solution for global compliance testing.

Constructed from lightweight yet durable aluminum with a stainless steel tip, this probe is built to withstand rigorous use. It features continuity through to the tip and is compatible with standard force gauges for versatile testing applications.

Manufactured entirely in our own U.S.-based facility, each probe is a proudly **Made in the USA** product—crafted with precision, held to the highest standards, and available with quick lead times.

IEC 62638-1	Figure V.1
CSA C22.2 No47-13	Figure 1
ANSI Z21.88-2017	Figure 8, Accessibility Probe
CSA 2.33-2017	Figure 8, Accessibility Probe
UL PA100A (M)	
UL 1492	Figure 18.1



A  Company

Ram Precision  
405 Caredean Drive  
Horsham, PA 19044 USA  
1-800-862-0102

Email: [office@ramprecision.net](mailto:office@ramprecision.net)  
Website: [ErgonomicsUSA.com](http://ErgonomicsUSA.com)