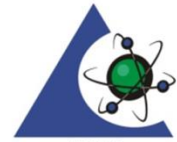




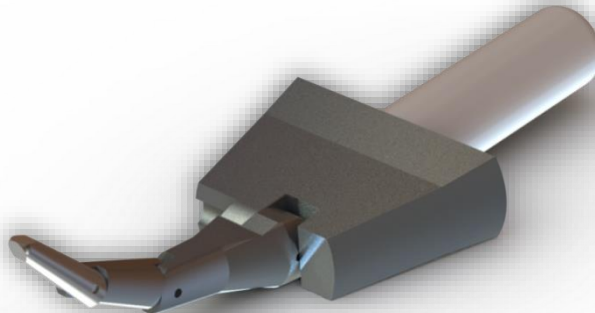
A **RAM PRECISION** Company



Accreditation No.: 75821

ISO/IEC17025

UL Metal Articulated Probe – Model ULP20-68



The UL Metal Articulated Probe is a standard articulated finger as required by Underwriters Laboratories in many of their standards. It is a jointed test probe specifically designed to test equipment likely to be accessible by children.

This probe also applies to more stringent international standards for hazardous parts access, such as IEC 62638-1.

The design is made of aluminum with a stainless tip, ensuring durability and long life in any environment. It also has continuity provision through to the tip, and is adaptable with standard force gauges.

This precision probe is made in-house in our manufacturing facilities, which we proudly offer as a “Made in the USA” item.

IEC 62638-1	Figure V.1
CSA C22.2 No47-13	Figure 1
ANSI Z21.88-2017	Figure 8, Accessibility Probe
CSA 2.33-2017	Figure 8, Accessibility Probe
UL PA100A (M)	
UL 1492	Figure 18.1



A **RAM PRECISION** Company

Ram Precision
405 Caredean Drive
Horsham, PA 19044 USA
1-800-862-0102

Email: info@ramprecision.net
Website: ErgonomicsUSA.com