



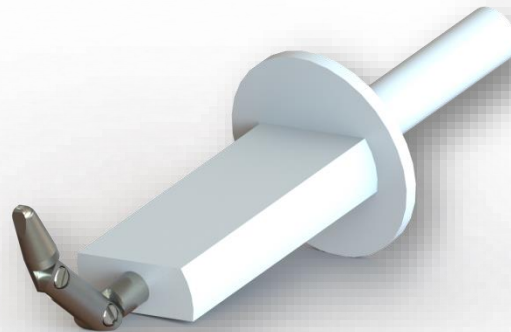
A  **PRECISION** Company



Accreditation No.: 75821

ISO/IEC17025

Jointed Finger Probe -- Model JFP10



This is a precision probe made in accordance with all IEC standards listed on page two. It is also used for Canadian and USA standards. It features a palm simulator and a restricted joint movement, which simulates the characteristics of the human hand. The finger is made of stainless steel and the rest of the instrument is Delrin®. Handle is designed to accept either a banana jack or a force gauge.

It is no longer necessary to have a separate probe for the medical safety standard. This one probe will meet all the different requirements that are in the IEC standards.

Our 17025 accredited laboratory is also contained within a high precision tool and die shop. All of our probes are made in our own building in the USA. Strict quality guidelines are followed to ensure adherence to even the strictest standards that apply. This also allows for very quick lead times, as generally our probes are in stock.

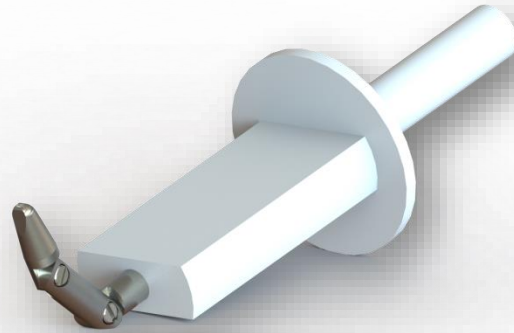


A  **PRECISION** Company

Ram Precision
405 Caredean Drive
Horsham, PA 19044 USA
1-800-862-0102

Email: info@ramprecision.net
Website: ErgonomicsUSA.com

Jointed Finger Probe -- Model JFP10



Applicable IEC and UL Standards

IEC 62638-1	Figure V.2
IEC 61032	Figure 2 Test Probe B
IEC 60529	Figure 1
IEC 60950	Clause 2.1.1.1b Figure 2A
IEC 60601-1	Figure 7
IEC 61010-1	Figure B.2
IEC 60335-2-3	Clause 21.1
EN 60529	Tableau VI
IPXXB	Figure 7B
IP2x	
UL 1450	Figure 12.4
UL 2703	Figure 2.1



Ram Precision
405 Caredean Drive
Horsham, PA 19044 USA
1-800-862-0102

Email: info@ramprecision.net
Website: ErgonomicsUSA.com